



2002 PSYLO U-TURN SERVICE GUIDE (FOR C, XC & SL)

Table of Contents

Tools Needed	2
Remove Lower Tube Assembly	2
Remove Damper Assembly (Right Side)	3
Remove the U-turn Spring Assembly (Left Side)	4
Install the U-Turn Spring and Damper Assemblies	5
Clean the Upper Tubes	5
Install the Lower Tube Assembly	6
Warranty	7
2002 Psylo C	8
2002 Psylo XC	9
2002 Psylo SL	10
International Distributors	12

For exploded diagram and part number information, refer to the 2002 Spare Parts Catalog, P/N 950-006157-00. Contact your local distributor or visit the RockShox website at www.rockshox.com for ordering information.

Information contained in this publication is subject to change at anytime without prior notice.

For the latest technical information, visit our website at www.rockshox.com.

Names used in this manual may be trademarks or registered trademarks of others.

TOOLS NEEDED

- 2.5 and 5 mm Hex Wrench
- Oil Pan
- Torque Wrench
- Plastic Face Mallet
- 24 mm 6-point Socket
- Small Blade Screwdriver
- Snap ring pliers
- 12" long cylindrical rod (plastic or wood)
- RockShox 5 wt. Oil
- RockShox RedRum
- Safety Glasses

After every 50 hours of riding or less depending on riding conditions and riding style, the following service should be performed. This service should be performed by a qualified mechanic, using proper tools.

NOTE: SERVICE ON YOUR FORK MAY BE PERFORMED WHILE STILL INSTALLED ON YOUR BICYCLE. USE THE EXPLODED VIEWS AT THE END OF THIS GUIDE TO IDENTIFY AND REFERENCE PARTS.

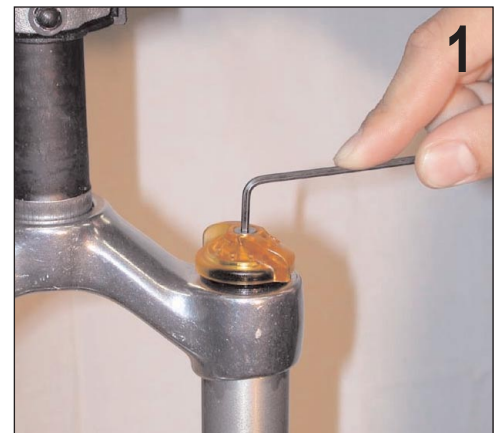
FOR INFORMATION REGARDING PURE SYSTEM SERVICE (PSYLO SL), REFER TO THE PURE SYSTEM SERVICE GUIDE ON OUR WEBSITE AT WWW.ROCKSHOX.COM.

REMOVE LOWER TUBE ASSEMBLY

1. Use a 2.5mm hex wrench to remove the screw on top of the U-Turn adjuster knob. Slowly remove the U-Turn adjuster knob.

NOTE: TAKE CARE NOT TO LOSE DETENT BALLS (3). THE DETENT BALLS ARE SPRING LOADED!

2. Using a magnet, remove detent balls and springs from the top cap. Note orientation of detent balls and springs within the top cap, they must be reinstalled in the same orientation.



3. Psylo XC/SL: Gently pull downward to remove the external rebound adjuster knob from the right shaft bolt.

TIP: RIGHT AND LEFT SIDE IS DETERMINED FROM THE RIDER'S PERSPECTIVE.

4. With a 5 mm hex wrench, loosen the shaft bolts five turns and firmly tap them with a plastic faced mallet to separate the shafts from the lower tubes.

TIP: TAPPING THE BOLTS RELEASES THE PRESSURE FIT BETWEEN THE LOWER LEGS AND THE SHAFTS.

5. Keep an oil pan below the fork to catch the oil. Inspect the condition of removed oil. If the oil is opaque and/or milky (water contamination), the lower tube assembly should be cleaned.
6. Remove shaft bolts completely.



7. Carefully slide the lower tube assembly off of the upper tubes. Use the oil pan to catch the excess oil.

NOTE: CYCLE THE DAMPER SHAFT (RIGHT SIDE) UP AND DOWN TO ENSURE ALL OIL IS REMOVED.

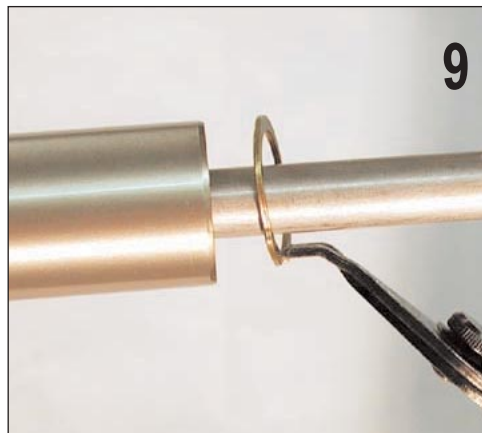
8. Apply biodegradable solvent (Simple Green, Pedros, or isopropyl alcohol) to a clean rag and wrap a rag around a long cylindrical rod or screwdriver to clean the lower tube internals. Dry thoroughly.



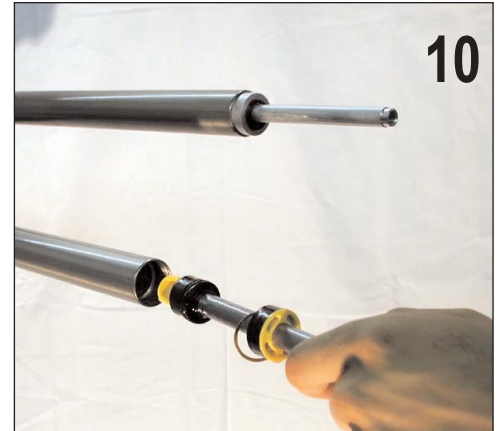
REMOVE DAMPER ASSEMBLY (RIGHT SIDE)

Steps 9 and 10 apply to Psylo C and XC only. Use the Pure System Service Guide to remove the assemblies on the Pure side of the Psylo SL.

9. Using snap ring pliers, remove the snap ring from the right upper tube (damper side).

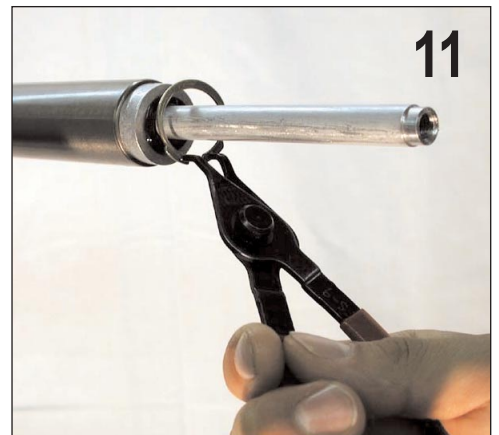


10. Remove the damper assembly from the right upper tube and inspect the o-ring for wear or damage. Replace each as necessary (Damper Assembly Kit: 110-005590-00; and Damper O-ring Bulk Packs 110-006452-10 or 110-006452-50).

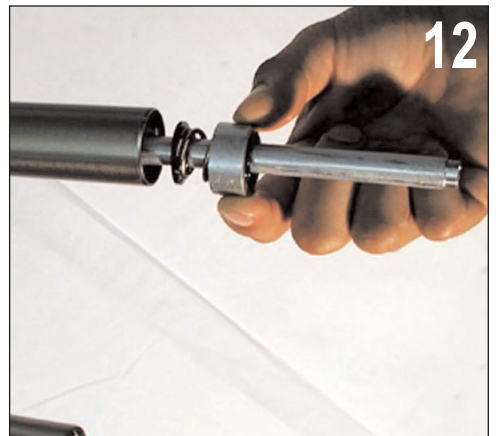


REMOVE THE U-TURN SPRING ASSEMBLY (LEFT SIDE)

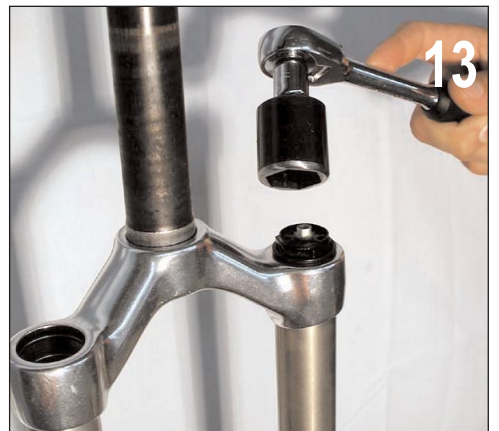
11. Remove the snap ring from the bottom of the left upper tube using snap ring pliers.



12. Carefully remove the base plate assembly from the U-Turn plunger shaft. Replace the assembly as necessary (110-006268-00).



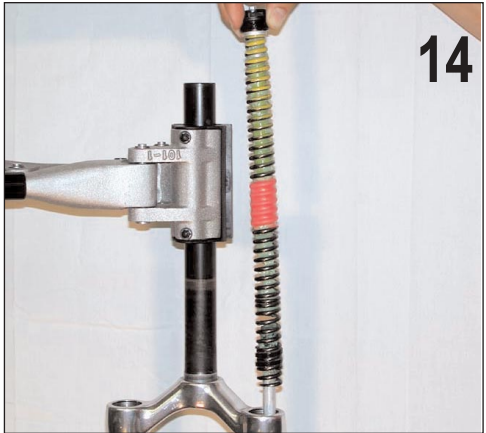
13. With a 24 mm socket, remove the top caps. **For Psylo SL: See the Pure System Service Guide for removal of the Climb-it Control adjuster knob and top cap assembly.**



2002 PSYLO U-TURN SERVICE GUIDE

14. Remove the U-Turn spring assembly. Clean and reapply Judy Butter to the spring and spring isolator. Inspect top cap o-ring. To change springs to a softer or firmer rate, or replace the U-Turn spring assembly, use the following kits:

Description	Part Number	Rider Weight
U-Turn Assembly Kit, Soft	110-006270-01	←140 lb (63 kg)
U-Turn Assembly Kit, Med (standard)	110-006270-02	140 to 170 lb (63 to 77 kg)
U-Turn Assembly Kit, Firm	110-006270-03	→170 lb (77 kg)



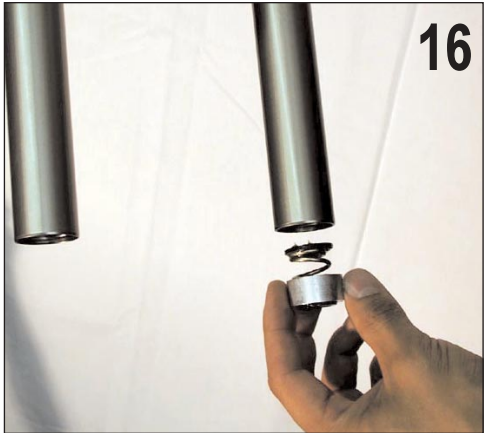
CLEAN THE UPPER TUBES

15. Apply biodegradable solvent (Simple Green, Pedros or isopropyl alcohol) to a clean rag, wrap rag around a long cylindrical rod or screwdriver and clean the upper tube internals. Dry thoroughly.

NOTE: USE CARE NOT TO SCRATCH THE INNER SURFACE OF THE TUBES.

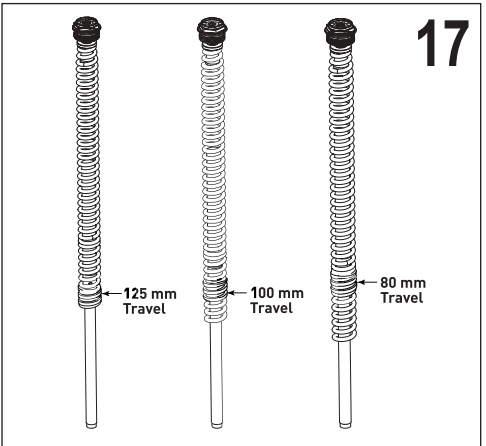


16. Install the base plate assembly (110-006268-00) w/snap ring into the bottom of the left upper tube.



INSTALL THE U-TURN SPRING AND DAMPER ASSEMBLIES

17. Ensure the U-turn spring assembly rod is fully extended to 125 mm and install the assembly through the top of the left upper tube.



18. Press firmly and hand thread the U-Turn top cap 1.5-2 turns to start threads and prevent stripping the top cap. With a 24 mm socket torque the U-turn top cap to 40 in-lb.
19. **Psylo C and XC:** Install the damper assembly into the right upper tube and insert the snap ring.
Psylo SL: Use the Pure System Service Guide to install the assemblies on the Pure side of the Psylo SL.
20. Install springs and detent balls into the U-Turn top cap. Be sure to install them in the same orientation that they were removed (see step 2 photo).
21. Using a 2.5 mm hex wrench, install the U-Turn adjuster knob and screw. Torque the screw to 12 in-lb.

NOTE: DO NOT USE LOCTITE ON THE SCREW, IT WILL DAMAGE THE PLASTIC U-TURN ADJUSTER KNOB



INSTALL THE LOWER TUBE ASSEMBLY

22. Carefully slide the lower leg assembly onto the upper tube assembly. Stop when you feel/hear the lower bushing engage the upper tube. This will allow room to pour oil into the lower leg bolt hole.
TIP: CHECK YOUR DUST SEALS TO ENSURE PROPER FIT AROUND THE UPPER TUBES.
23. Invert the fork, and add 20cc of RockShox 5wt oil into the bottom of the left lower leg (U-Turn side), through the bolt hole.

TIP: THE U-TURN SHAFT SHOULD NOT BE SET IN THE LOWER LEG CASTING YET. THIS WILL ALLOW CLEARANCE FOR THE OIL TO FILL THE LEG.

24. Inspect the nylon crush washers for wear or damage. Replace if necessary. Install U-Turn shaft bolt and torque to 60 in-lb.



25. Turn the fork right-side up. Insert a long plastic or wooden rod through the top of the right upper tube and lightly seat the damper into the casting. This will enable you to thread the shaft bolt into the damper.
26. **Psylo XC and SL only:** Insert the rebound adjuster knob into the damper and turn rebound valve to the full clockwise position BEFORE installing the shaft bolt.

IMPORTANT!: THIS PREVENTS DAMAGE TO THE PLASTIC REBOUND ASSEMBLY IN THE SHAFT. REMOVE THE REBOUND ADJUSTER KNOB.

27. Install the hollow (solid bolt on Psylo C) shaft bolt into damper shaft and torque to 60 in-lb. Insert the rebound adjuster knob through the hollow shaft bolt and press firmly to seat.



28. **Psylo C and XC only:** Add 140cc of RockShox 5 wt. oil into the top of the right upper tube (through the top cap hole).

Psylo SL: See the Pure System Service Guide for the appropriate refill fluid level for the right side.

29. Using a 24mm socket, install the top cap on the damper side (right). Torque to 40 in-lb.

For Psylo SL: See the Pure System Service Guide for installation of the Climb-It control adjuster knob and top cap assembly.



WARRANTY

RockShox, Inc. warrants its products for a period of one year from original date of purchase to be free from defects in materials or workmanship. Any RockShox product that is returned to the factory and is found by RockShox to be defective in materials or workmanship will be repaired or replaced at the option of RockShox, Inc. This warranty is the sole and exclusive remedy. RockShox shall not be held liable for any indirect, special, or consequential damages.

The warranty does not apply to products which have not been properly installed and adjusted according to RockShox installation instructions. The warranty does not cover any product that has been subject to misuse or whose serial number has been altered, defaced or removed. This warranty does not cover paint damage or modifications to the product. Proof of purchase is required.

WARRANTY REPAIR

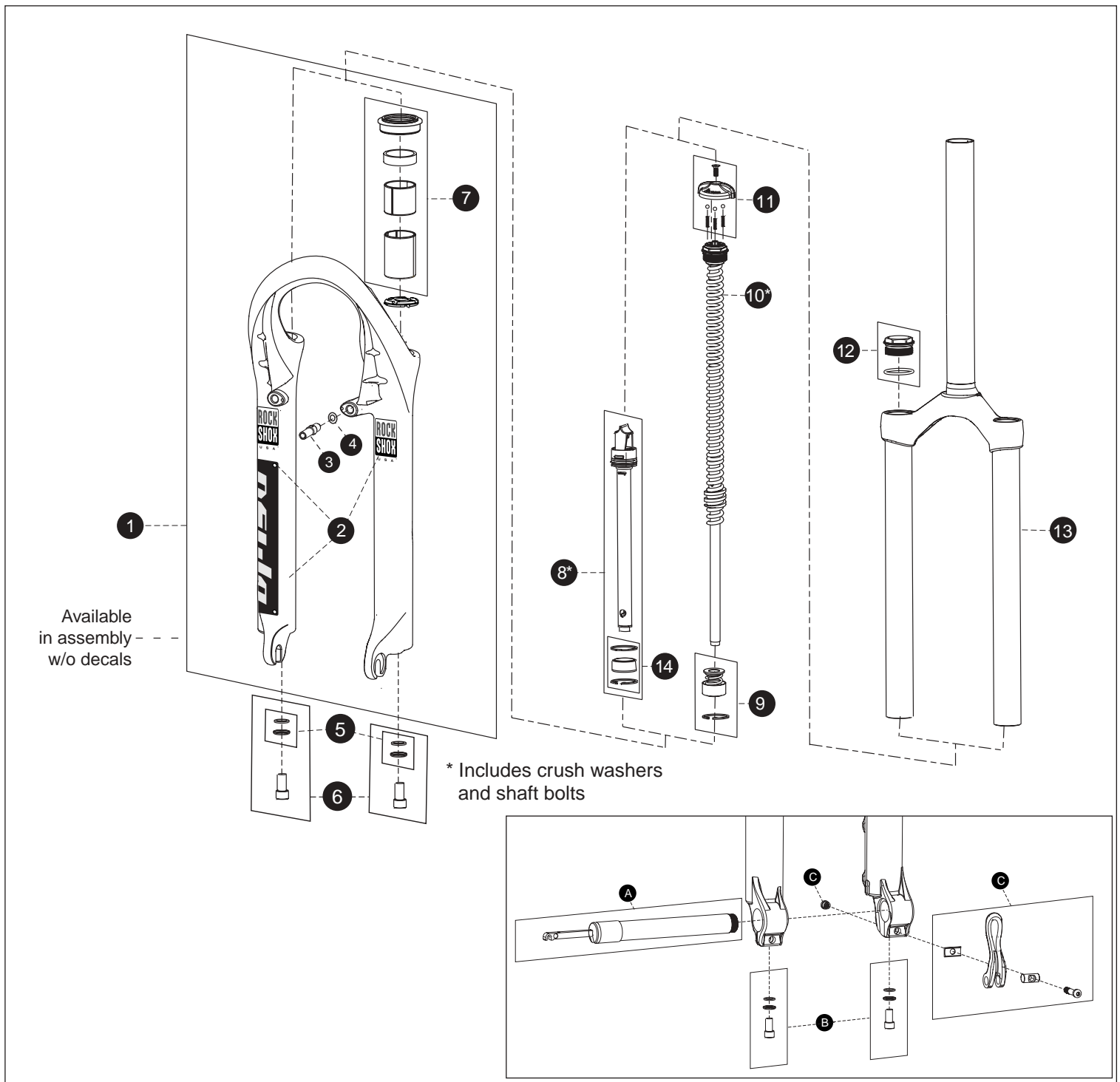
If for any reason it should be necessary to have warranty work done, return the product to the place of purchase. In the USA, Dealers should call for a Return Authorization number (RA#) prior to returning product.

Products returned for inspection must be sent freight prepaid and with proof of purchase to:

RockShox, Inc.
1610 Garden of the Gods
Colorado Spring, CO 80907

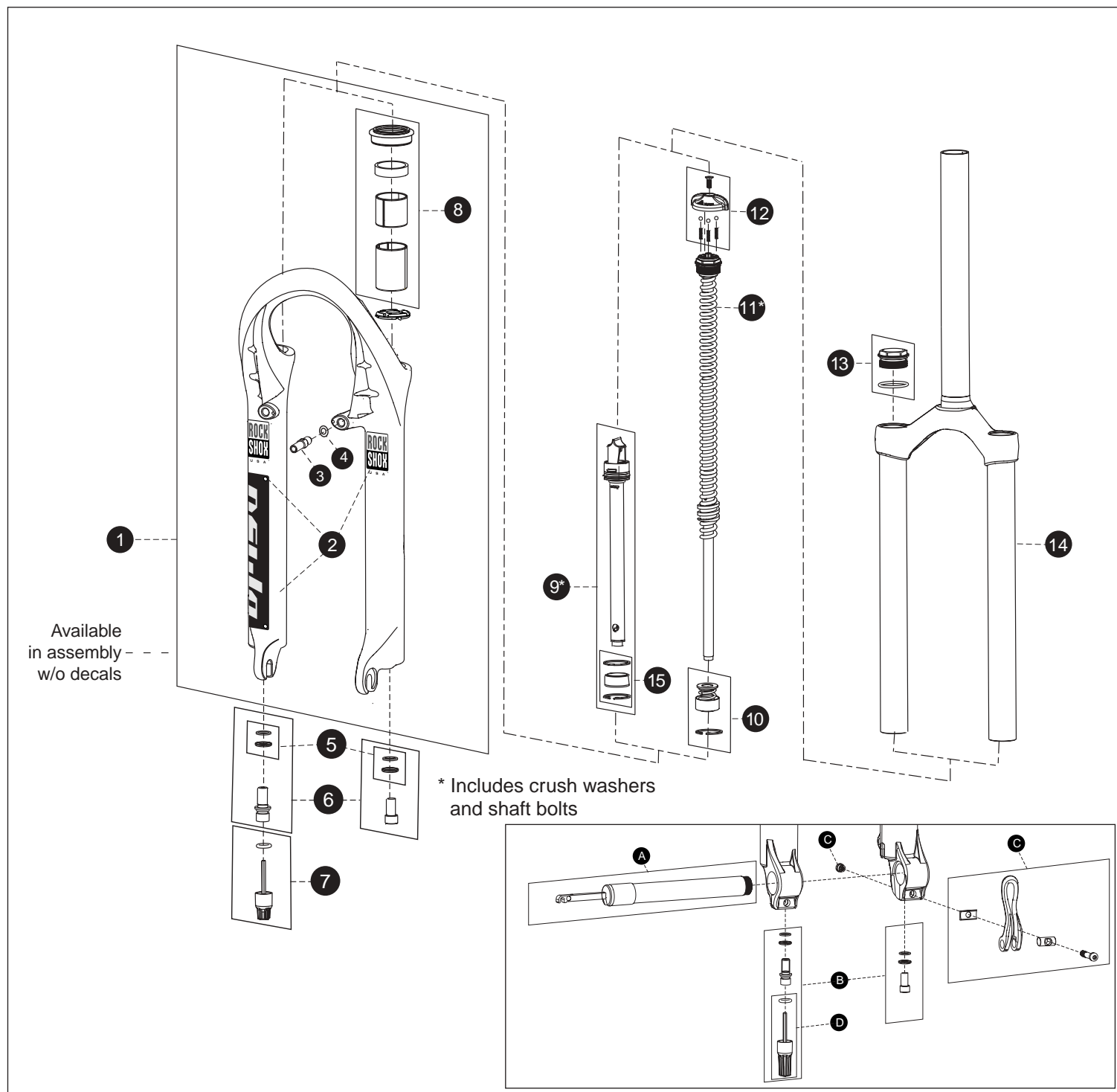
For more technical information, visit our website at www.rockshox.com. For toll-free technical support in the USA, call 1.800.677.7177.

Customers in countries other than the USA should contact their local dealer or distributor.



1	Psylo LL, Conventional w/Boss, Black	110-006267-00	7	Psylo Revive Kit	110-006350-00	Tullio Hardware		
	Psylo LL, w/Boss, Pearl Silver	110-006267-08	8	Psylo XC Damper Assy	110-005590-00	A	Tullio Axle Kit	110-005653-00
	Psylo Tullio LL, Disc Only, Black	110-006272-00	9	02 U-turn Base Plate Assembly Kit	110-006268-00	B	Tullio External Hardware Kit	110-005652-00
	Psylo Tullio LL, Disc Only, Pearl Silver	110-006272-08	10	U- Turn Assembly Kit, Soft	110-006270-01	C	Tullio Lower Leg Hardware	110-005654-00
	Psylo LL, Disc Only Conventional, Black	110-006298-00		U-turn Assembly Kit, Medium	110-006270-02			
	Psylo LL, Disc Only Conv., Pearl Silver	110-006298-08		U-turn Assembly Kit, Firm	110-006270-03	Not Shown:		
2	02 Psylo C Steel Str Decal Kit	110-006271-00	11	U-turn Adjuster Knob Kit	110-006269-00		Disc Brake Cable Accessory Kit	110-006344-00
	02 Psylo C Aluminum Str Decal Kit	110-006271-01	12	Psylo XC Non-Adjustable Top Cap	110-005605-00		Psylo C/XC Damper O-ring, Qty 10	110-006452-10
3	Brake Post	48131	13	Psylo XC Crwn/SteelStr/Uppr, 1-1/8 Thrdless	110-005594-00		Psylo C/XC Damper O-ring, Qty 50	110-006452-50
4	Flat Washer	52261		Psylo XC Crwn/AlumStr/Uppr, 1-1/8 Thrdless	110-005668-00			
5	Crush Washer Kit	110-005552-00						
6	Hydra Air/ Hydra Coil Ext. Hardware Kit	110-005651-00						

2002 PSYLO XC



1	Psylo LL, Conventional w/Boss, Black	110-006267-00
	Psylo LL, w/Boss, Silver	110-006267-08
	Psylo Tullio LL, Disc Only, Black	110-006272-00
	Psylo Tullio LL, Disc Only, Silver	110-006272-08
	Psylo LL, Disc Only Conventional, Black	110-006298-00
	Psylo LL, Disc Only Conventional, Silver	110-006298-08
2	02 Psylo XC Steel Str Decal Kit	110-006273-00
	02 Psylo XC Aluminum Str Decal Kit	110-006273-01
3	Brake Post	48131
4	Flat Washer	52261
5	Crush Washer Kit	110-005552-00
6	Hydra Air/ Hydra Coil Ext. Hardware Kit	110-005651-00

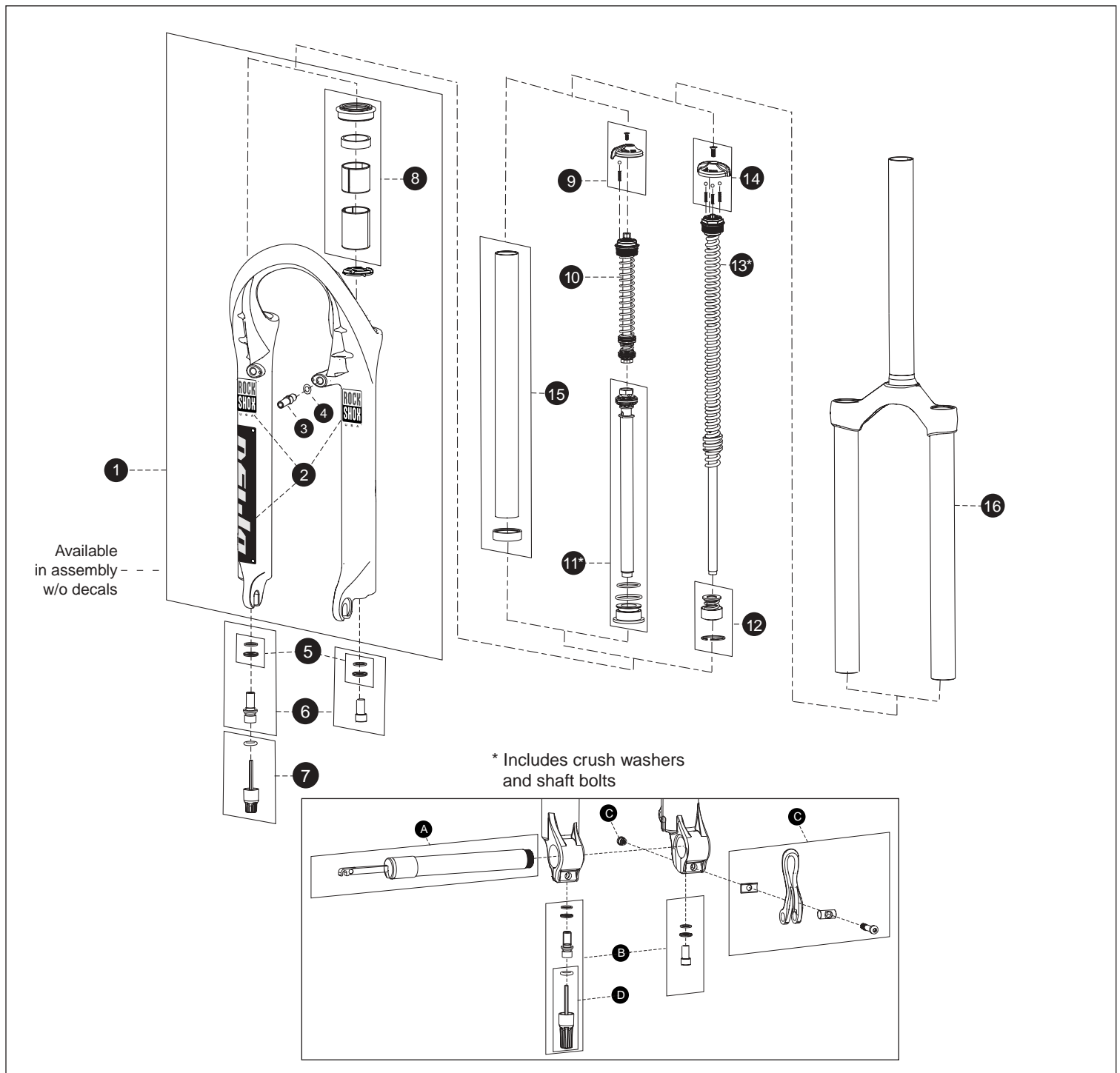
7	Psylo Conventional Rebound Adj. Knob	110-005603-00
8	Psylo Revive Kit	110-006350-00
9	Psylo XC Damper Assy	110-005590-00
10	U-turn Base Plate Assembly Kit	110-006268-00
11	U-turn Assembly Kit, Soft	110-006270-01
	U-turn Assembly Kit, Medium	110-006270-02
	U-turn Assembly Kit, Firm	110-006270-03
12	U-turn Adjuster Knob Kit	110-006269-00
13	01 Psylo XC Top Cap, Non-Adjust	110-005605-00
14	Psylo XC Crwn/SteelStr/Uppr, 1-1/8 Thrdless	110-005594-00
	Psylo XC Crwn/AlumStr/Uppr, 1-1/8 Thrdless	110-005668-00

Tullio Hardware

A	Tullio Axle Kit	110-005653-00
B	Tullio External Hardware Kit	110-005652-00
C	Tullio Lower Leg Hardware	110-005654-00
D	Tullio Rebound Adjuster Knob Kit	110-006343-00

Not Shown:

	Disc Brake Cable Accessory Kit	110-006344-00
	Psylo C/XC Damper O-ring, Qty 10	110-006452-10
	Psylo C/XC Damper O-ring, Qty 50	110-006452-50



1	Psylo LL, Conventional w/Boss, Black	110-006267-00	9	Climb-it Control Adjuster Knob	110-005558-00	Tullio Hardware	
	Psylo, Conventional w/Boss, Pearl White	110-006267-19	10	01 Psylo SL/Race Pure Compression Assy	110-005586-00	A	Tullio Axle Kit 110-005653-00
	Psylo Tullio LL, Disc Only, Black	110-006272-00	11	01 Psylo SL/Race Rebound Assembly	110-005589-00	B	Tullio External Hardware Kit 110-005652-00
	Psylo Tullio LL, Disc Only, Pearl White	110-006272-19	12	U-turn Base Plate Assembly Kit	110-006268-00	C	Tullio Lower Leg Hardware 110-005654-00
	Psylo LL, Disc Only Conventional, Black	110-006298-00	13	U-turn Assembly Kit, Soft	110-006270-01	D	Tullio Rebound Adjuster Knob Kit 110-006343-00
	Psylo LL, Disc Only Conv., Pearl White	110-006298-19		U-turn Assembly Kit, Medium	110-006270-02		
2	02 Psylo SL Decal Kit	110-006274-00		U-turn Assembly Kit, Firm	110-006270-03	Not Shown:	
3	Brake Post	48131	14	U-turn Adjuster Knob Kit	110-006269-00		Disc Brake Cable Accessory Kit 110-006344-00
4	Flat Washer	52261	15	Psylo Pure Tube	110-005557-00		Pure Rebuild Kit 110-006245-00
5	Crush Washer Kit	110-005552-00	16	Psylo SL Crwn/Str/Uppr, 1-1/8 Thrdless	110-005597-00		Pure Compression adjuster Rod Kit 110-006324-00
6	Hydra Air/Hydra Coil Ext.Hardware Kit	110-005651-00					
7	Psylo Conventional Rebound Adj. Knob	110-005603-00					
8	Psylo Revive Kit	110-006350-00					